



e-ISSN: 2319-8753 | p-ISSN: 2347-6710

IJRSET

International Journal of Innovative Research in
SCIENCE | ENGINEERING | TECHNOLOGY

INTERNATIONAL JOURNAL OF INNOVATIVE RESEARCH

IN SCIENCE | ENGINEERING | TECHNOLOGY

Volume 12, Issue 7, July 2023

ISSN INTERNATIONAL
STANDARD
SERIAL
NUMBER
INDIA

Impact Factor: 8.423

9940 572 462

6381 907 438

ijirset@gmail.com

www.ijirset.com



Harvest Applauds the Use of Machine Learning

Hareesh Ravindra Koppada ¹, A G Vishvanath ²

P.G. Student, Master of Computer Applications, Bangalore Institute of Technology, Bangalore, Karnataka, India¹

Assistant Professor, Master of Computer Applications, Bangalore Institute of Technology, Bangalore, Karnataka, India²

ABSTRACT: India's key economic engines are, without a doubt, the agricultural sector and related manufacturing sectors. Also, the agriculture industry makes a major impact on the national economy. The country's spacious rural areas are an asset. Still, compared to international standards, the harvest yield per acre is extremely low. This could be a reason in the high suicide rate among ranchers in rural India. This study establishes a straightforward method for calculating realistic yield projections for ranchers. The suggested framework is a network of ranches connected through a flexible computer application. A GPS system could be used to determine precisely where the customer is. The client decides where to build and what kind of dirt to use. Customers can select the most lucrative harvest list or estimate harvest yield for a certain crop with the help of AI calculations. Help Vector Machines, neural networks, Random Forests, and other machine learning means Multivariate Linear Regressions, and K- Nearest Neighbour's used to forecast agricultural output. Among these, the Random Forest had the highest rate of success (95%). The framework also suggests the optimal time to apply composts for best yield.

KEYWORDS: Farm Recommender System, neural networks (ANN), Assistance Vector Machine (SVM), K-Nearest Neighbour, Crop Return Prediction, and Random Forest Neighbours (KNN), Fertiliser, and Multivariate Linear Regression.

I. INTRODUCTION

The agricultural sector in India possesses a rich historical legacy. According to recent data [15], India currently ranks as the second-largest producer of ranches globally. In 2009, over 50% of the labor force was engaged in various facets of the agriculture sector, which contributed to 16.6% of the GDP, or the national GDP through activities such as ranger services and fisheries. There has been a decline in the significance of agriculture to India's economy [1]. The economic sustainability of a farm is significantly contingent upon the caliber of its crop. The harvest output is influenced by various factors, including the environment, geography, nature, and economics [6]. Ranchers encounter challenges in making decisions regarding the timing and selection of crops to cultivate due to the fluctuating nature of market prices [7]. According to a source cited as Wikipedia [15], the prevalence of suicide in India has exhibited fluctuations ranging from 1.4% to 1.8% per 100,000 individuals throughout the course of recent years. Due to the unpredictable nature of weather patterns, ranchers have uncertainty in determining the most favorable timing for commencing crop harvesting activities. The utilization of various composts is rendered ambiguous due to fluctuations in meteorological patterns and the accessibility of essential resources like air, water, and soil. Consequently, there has been a decline in the rate of crop harvesting [2]. The matter can potentially be resolved through the provision of a robust and user-friendly recommendation system to ranchers.

This study introduces a paradigm aimed at addressing the aforementioned issues. The proposed framework is atypical in that it provides guidance to ranchers on how to optimize harvest production while also recommending the most advantageous harvest approach for each specific site. The proposed strategy has the potential to significantly enhance harvest yield, hence addressing the growing demand within the country [8]. The model being suggested aims to forecast crop production by considering many characteristics such as precipitation, temperature, geographical location, seasonality, and soil composition. The optimal timing for the utilization of composts can also be determined through the application of a systematic framework. The prevailing paradigm posits that agricultural output is either inadequately accessible or reliant on expensive and challenging-to-sustain technology. The framework being offered



suggests the utilization of a configurable web-based tool that provides precise predictions of harvest production, enabling the selection of the most optimal harvest to pursue. The precise location of the customer can be determined through the utilization of a Global Positioning technology (GPS) technology. The provision of the development area and soil type is undertaken by the customer. The model provides an review of the quantity of harvest that is necessary for a specific harvest event. The program also provides recommendations for the ideal timing of fertilizer application.

The document outlines several key commitments. The objective of this study is to employ a diverse range of Machine Learning methodologies in To project the yield of crops in certain districts. It is vital to remember that the error rate of these predictions is directly associated with the level of precision achieved. A dynamic and user-friendly program has the potential to propose the optimal yield. Additionally, a region identifier that utilizes GPS technology is employed to obtain the local precipitation information. In this scenario, a recommender offers guidance on the appropriate timing for the application of manures.

II. LITERATURE REVIEW

ML is commonly employed in the agricultural sector to enhance efficiency and productivity. This is achieved through the integration of mechanical capabilities and advancements, which aim to optimize horticultural practices. By utilizing various ML techniques, such as predictive modeling, farmers are able to accurately forecast crop yields and make informed decisions to streamline their operations. The report presents a comprehensive Studying the advantages brought about by various algorithms. neural networks are one example of such a gadgets. (ANN), Fuzzy Networks, and various data mining algorithms. It is recommended that all of the aforementioned continuous datasets be consolidated for a forthcoming examination [9]. The state of Madhya Pradesh in India was chosen as the location for one of the initial attempts to examine the impact of climatic constraints on agricultural productivity [10]. The selection of locations was influenced by the geographical extent of the crop. The selection of the top five areas for yield was built using data analysis. of these models. The harvested crops that were evaluated were chosen from a pool of previously deemed successful harvests at the site under study. Several selected crops and their projected yields over a 20-year period include maize, soybeans, wheat, and rice. The incorporation of the harvested crops resulted in a notable enhancement of the constructed model's precision, increasing it from 76% to 90%. On average, the overall improvement amounted to 82%. Another significant study investigates the soil state, forecasts of harvest production, and a plausible recommendation for compost [11]. The model utilized the client's geographical area and their Ph-rating as data elements. Weather and temperature forecasts were computed via an Application Programming Interface (API) to accommodate the current geographical location. This strategy considers the implications of both supervised and unsupervised machine learning calculations. The authors proposed a classifier in reference [12] that utilizes an eager system for predicting agricultural yields. Superior outcomes can potentially be achieved by employing A classification tool using a decision tree relies on attributes. The practice of coordinating the affects of multiple models, as advocated by a proposed collective model, has continuously shown to be more advantageous compared to relying solely on a single model. The utilization of multiple A non-scientific method is used to forecast crop yields using decision tree models. Based on the data, the average and variance are data, which is divided into two groups: one including 67 percent of preparation information and the other consisting of 33 percent of test information. To ensure the attainment of precise results, this approach additionally incorporates the grouping of crops exhibiting similar traits.

Considerable resources and computational power have been dedicated to the application of Agriculture-related AI algorithms. Enhancing ranch productivity and delivering it to the end-consumer at optimal cost and quality poses a significant challenge in the field of agriculture. Approximately 50% of domestic production is wasted due to waste prior to its ultimate consumption by the end user. The methodology presented offers suggestions for reducing the amount of unused ranch goods. The paper introduces a novel approach that use K- nearest neighbors (KNN) calculations to generate clusters that forecast agricultural crop yields. According to previous studies [13], KNN clustering has demonstrated higher efficacy contrasted with SVM or regression methods.

The utilization of a controlled A learning strategy is used to produce guesses. regarding agricultural crop output. The study emphasized several authentic attributes, together with their correlation to the framework's ability to enhance agricultural yield [19]. The crop yield is influenced by two key elements, namely precipitation and temperature. The authors employed Intermittent computing using neural networks (RNN) and long brief memories (LSTM) to increase



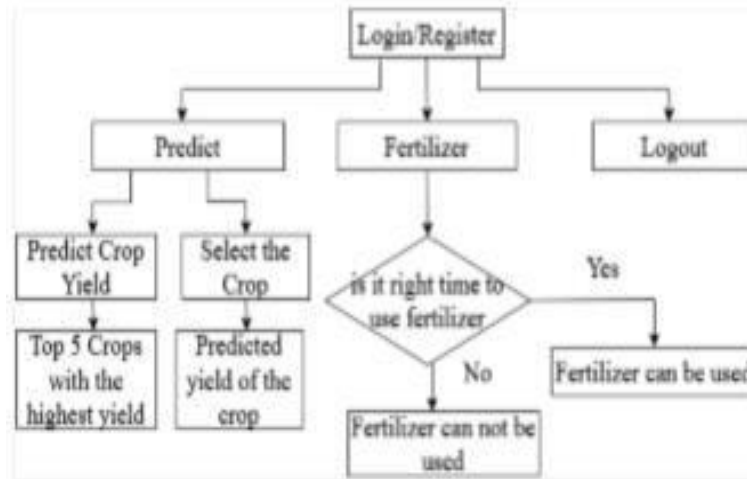
the timeliness of time-series data [20]. SARIMA (Seasonal Auto This is Integrated Moving Average), ARMAX (Auto This is Moving Average), and ARMA plus exogenous components) methodologies are employed for the purpose of forecasting forthcoming temperatures and precipitation patterns, utilizing dependable data sources. The utilization of the most precise model is implemented within the framework of fluffy logic for the purpose of forecasting agricultural yields. The external parameters considered in the proposed strategy encompass evaporation and cloud cover.

III. METHODOLOGY

In recent times, Numerous options have been proposed. forth; however, the difficulties associated with developing a crop suggestion software that is user-friendly persist. The proposed methodology aims to address these limitations by pushing for the implementation of a software solution that prioritizes user-friendliness and takes ecological factors to heart such as weather and soil conditions. The principal aim is to enhance the variety of potential yields throughout the cultivation period. The proposed approach has the potential to benefit ranchers by streamlining the process of harvest selection, enhancing productivity, and reducing instances of self-destruction (16).

The proposed methodology utilizes informative indices of the site to estimate the harvest yield. The integration of machine learning with farming practices is expected to facilitate further agricultural improvements, leading to enhanced crop yields and improved resource management. A comprehensive comprehension of previous years' data is crucial for the assessment of current performance. Information is extracted from various reliable websites, including data.gov.in, Kaggle, and the Indian Water Portal. The informative indexes mostly center on the states of Maharashtra and Karnataka. The dataset encompasses several attributes, including the state, geographical coordinates, year, method of harvest, seasonality, developmental region, creation details, and additional factors. The dataset containing soil types is present in further datasets that encompass regional and state-level data as well. The subset of soil data is collected independently from the primary dataset and afterwards integrated with it. To enhance our primary datasets, we incorporate additional information on average temperature and annual precipitation from an alternative data source. The essential data indexes have been refined and are now prepared for utilization. Invalid qualities are replaced with normal ones. Prior to processing the computations, all outstanding credits are initially converted into appropriate proper names. In order to manage categories, the informative indexes employ a mechanism known as single hot encoding.

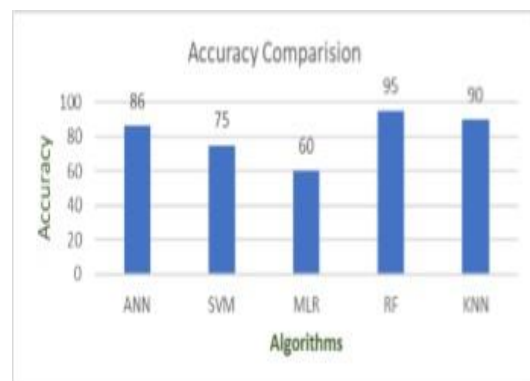
The schematic representation of the proposed concept is depicted in Figure 1. The software exhibits a modular structure, encompassing several subtopics pertaining to both forecasting and manure management. The Flexible Program provides a diverse array of services. The rancher is required to complete the application process in order to enroll. Upon registration, the rancher will be granted access to the administrative elements of the mobile application. The anticipation module utilizes credits derived from harvest-specific relevant indices in order to generate a forecast regarding the yield of the harvest. Furthermore, the anticipate module provides recommendations for the most financially advantageous rancher. By utilizing the compost module, the rancher has the ability to effectively utilize the manure.



IV. RESULT ANALYSIS

In this analysis, we will examine the outcomes of the computations pertaining to the states of Maharashtra and Karnataka. The parameters for calculation encompass various factors, such as the crop type, that year's year and season, the type of soil, the geographical region, and the specific place. The evaluation of each option is conducted based on its ability to accurately estimate the anticipated crop yield. The informative index was computed using the Arbitrary Forest algorithm, with a precision rate of 95%, indicating a high level of accuracy. The Neural network algorithms (ANN) and other kinds of machine learning are used to estimate agricultural yields. Support Vector Machines (SVM), Random Forestry, Multivariate Linear Regression, and K-Nearest Neighbors (KNN). Table 1 presents the grouped outcomes of the accuracy correlation observed in multiple machine learning calculations. Figure 5 depicts a visual depiction of the obtained results.

Algorithm	Accuracy
Artificial Neural Network (ANN)	86
Support Vector Machine (SVM)	75
Multivariate Linear Regression (MLR)	60
Random Forest (RF)	95
K Nearest Neighbor (KNN)	90



The Crop Recommender mechanism, Fig.

Option2: In situations where the client lacks certainty about the anticipated for the present, yield year, the rancher opts to utilize the recommender framework. Figure 7 illustrates the suggested yield suggestions according to different soil types and geographical regions. Customers are provided with the opportunity to choose from a predetermined selection of options. Another consideration is the choice of an optimal timing for the application of manures by a rancher. As depicted in Figure 8, the framework examines the weather conditions over a span of 14 recently and implies the optimal timing for utilizing the composts.



V. CONCLUSION

In this analysis, we will examine the outcomes of the computations pertaining to the states of Maharashtra and Karnataka. The parameters for calculation encompass various factors, such as the Kind of crop, the particular year and season, the type of soil, the geographical region, and the specific place. The evaluation of each option is conducted based on its ability to indicating a high level of accuracy. The Artificial Neural Networks (ANN), supporting vector machines (SVM), Multicolor Linear Regression (LR), Random Forest, and other forms of machine learning are used to estimate crop yields. K-Nearest Neighbors (KNN). Table 1 presents the grouped outcomes of the accuracy correlation observed in multiple machine learning calculations. Figure 5 depicts a visual depiction of the obtained results.

REFERENCES

1. IN 11TH CONFERENCE ON ADVANCED COMPUTING IOT BLOCKCHAIN BASED AGRICULTURE BY SREERAM IN [2017].
2. JAIN PROPOSED THAT ANALYSIS OF GROWTH AND INSTABILITY IN THE AREA OF PRODUCTS AND YIELD IN THE YEAR OF [2018]
3. IN THE YEAR OF [2016] MANJULA DESCRIBED IN THE INTERNATIONAL CONFERENCE ON THE BASIS OF PREDICTION OF CROP YIELD.
4. AT INDONESIAN JOURNAL OF ENGINEERING AND CS [2019] ON AGRICULTURE DATA ANALYTICS BY SAGAR
5. BOGAARDT IN THE YEAR OF [2015] SMART FARMING USING BIG DATA IN AGRICULTURE SYSTEM.



SJIF Scientific Journal Impact Factor

Impact Factor: 8.423



INTERNATIONAL JOURNAL OF INNOVATIVE RESEARCH

IN SCIENCE | ENGINEERING | TECHNOLOGY

 9940 572 462  6381 907 438  ijirset@gmail.com



www.ijirset.com

Scan to save the contact details